

# THE 1953 BULLDOG

Published By  
The Students  
Of  
SPIRO  
High School

Spiro,  
Oklahoma



**SPIRO MOUND VILLAGE**

Scene From The Past

# Dedication

"Pleasures are like poppies spread,  
You seize the flower, its bloom is shed;  
Or like the snow falls in the river,  
A moment white—then melts forever;

...

Burns

To the ages past, to the eventful present, to the hopeful future, we humbly dedicate this yearbook as a tribute of respect. While we who are pictured here are not bowed with cares of the age, we salute our predecessors and those who now lead the way; but we recognize that it is we who will assist in assuring a brighter tomorrow. So to those who read these pages, we submit this 1953 edition of THE BULLDOG as:

"A votive stone, which may endure, When like our sires, our sons are gone." —Emerson

## THE SPIRO MOUND MODEL VILLAGE

The model pictured in the lower right corner on the front cover is an authentic reproduction of the temple and a portion of the village which existed near the great pre-historic Indian mound north of Spiro in northern LeFlore County. The site was excavated by archaeological crews under the direction of Dr. Forrest E. Clements of the Anthropology Department of the University of Oklahoma as part of a Work Projects Administration project sponsored by the state university. Details of house construction accurately follow the field excavation data and the costumes of the human figures are copied from those illustrated on engraved shell gorgets found in the prehistoric graves. The ceremony which is shown in progress has been reconstructed from writings of about twenty early authorities on the southeastern Indians covering the period from 1540 to 1758. It is not certain, of course, that the prehistoric Spiro Indians practiced the same rituals as the later southeastern tribes, but similarities in the material culture lend probability to the supposition. This model was prepared under the supervision of Miss Sarah White.

## A CHIEFTAINS FUNERAL

Death ceremonies the world over are occasions filled with pathos. Few people, however, observed such terrible and tragic rites as the Southeastern tribes. These were based on a firm belief in a life after death in "Spiritland," where the departed lived much as they had on earth but in more ideal fashion.

Upon the death of a chief his officials, wives and servants were killed by strangling. The souls of these victims were to accompany the warrior to the other world, and serye his needs as they had on earth. The number of victims sacrificed for such duty depended on the rank of the Sun or Chief who had died. We are told by Du Pratz that sometimes hundreds of natives were immolated in this manner.

In the Spiro Mounds over a thousand skeletons were found. Most of these were discovered in groups of 10 to 30 individuals. Since no evidence of death by warfare was found, it is probable these group burials were those of sacrificed victims.

A brief introduction to the scene depicted in the model is necessary. A great warchief has died, which tragedy has plunged the whole village into mourning. The eternal fire in the Temple has been extinguished amid the weeping and wailing of the entire tribe. All activity in the village save that pertaining to the funeral has been terminated.

A half-built house, shown in the lower corner of the case, has been temporarily abandoned so its builders can participate in the all important veneration of the dead. The outside walls, formed of upright cedar poles, later will be bound with cane and plastered with clay. Four center posts used in supporting the thatch roof stand firmly planted in the clay subsoil. All posts in this model are made from cedar wood actually found in the prehistoric Spiro houses.

The victims seen in the interior of the Temple have prepared for dissolution in the days that have intervened between the death of the Warchief and the present, final moment of their lives. The great Warchief has exercised absolute authority over his people, and has received perfect submission and obedience during his life. In death as in life the natives must exhibit profound respect. Though the tragic custom appears brutal to us, to the ancient Indians it is an expression of great love and devotion.

The funeral procession, having slowly walked three times around the Temple, has entered with the body of the Warchief. In the model the Temple roof has been removed in order for us to look in. The body of the Warchief lies in state on a cane bier. He is dressed in his finest garments, and provided with an abundance of food and weapons for the journey to "Spiritland." A faithful dog has been killed and lies at the foot of the bier, ready to serve his master in the New World. Standing at the head of the Warchief is an old warrior, a staunch friend at whose side he has fought many times. Presiding over the body is the Chief Priest of the Temple, the Master of Ceremonies whose incantations are necessary for a safe journey into Spiritland. Four pallbearers, the Guardians of the Temple, flank the secret place, a cane closet containing objects sacred to the religion of these ancient peoples. And two other Guardians stand facing each other in reverent silence over the dead embers of the Temple fire.

The death cry has been given by the officials of the Temple, and the victims are taking their places on mats. Each victim is surrounded by eight kinsmen, who have clamored for the opportunity to aid in their strangling. By taking part in the ceremony the kinsmen have risen from the lower class and taken a place among the nobility of the tribe. They are dressed in typical costume for warm weather; a loin cloth of mulberry bark fabric, decorated with raccoon tails or shell ornaments. Shell bracelets, or necklaces supporting a gorget, and stone ear spools worn in the distended ear lobes decorate these dandies. The Death ritual above all other ceremonies calls for elaborate dress.

Each of the kinsmen has a role in the strangling of a victim. One carries a tomahawk, and makes frequent movements as if to strike the victim; another carries the mat upon which the victim kneels; a third carries the cord; another, a bowl containing six balls of tobacco which the victims swallow to be stupefied; a fifth bears a small bottle of water to wash down the tobacco; and the remainder lend their strength with three of the aforementioned to throttle the victim.



Two other victims may be seen entering the passage way of the Temple. Each is followed by his eight executioners. These are the Doctor and Pipebearer of the dead Warchief. This aboriginal doctor could not afford to lose his patient, since in so doing he signed his own death warrant. The Pipebearer holds the favorite pipe of the deceased, an exact duplicate of one of the famous effigy pipes unearthed in the Spiro Mound. Large mats skillfully woven of cane and grass line the entrance passage, the roof of which has been removed in the model.

The other victims, kneeling on mats in front of the large cedar center posts are: the favorite wife, dressed in a blue gown worn off the shoulder; the Warchief's second wife, who is both bewailing the death of her loved husband and her own ill fortune; the Chancellor, the stern counsellor of the dead ruler; and a noblewoman whose friendship for the deceased has prompted her to join him in Spiritland. The moment depicted in this tragic scene is that just before the strangling.

Outside the Temple the evil-smelling people or commoners wail and lacerate themselves in their grief. The best hunters of the tribe have secured fat deer and antelope for the funeral feast to take place after the sacrifice. A little boy, seen in the upper corner, proudly brings his contribution—an opossum which has fallen easy prey to his miniature bow and arrow. Around the cooking pots may be seen the squaws, whose duties of tending to the papooses may not be neglected even on so solemn an occasion.

Standing beside the house next to the Temple, a young warrior is painting a death mask on the face of his comrade. Up from the Arkansas River bank warriors from a nearby village hasten to take their places in the ceremony. A late comer quickly paddles his dugout to the scene. Dugout canoes were hollowed from cedar logs with the use of fire. The model for this one was taken from a sketch on a conch shell found in the Spiro Mounds.

The house next to the Temple is a complete reconstruction based on field data from Spiro. The high roof is thatched with long river sedge grass, a custom practiced by the Caddo, Ceni, Taensas, Choctaw and Natchez Indians in historical times.

In the rear of the second house from the Temple are seen a group of young warriors. This house has been cut away to show the manner of construction. Especial attention is called to the cane matting under the thatchwork of the roof. Du Pratz, Joutel, and other early explorers say that these houses were quite waterproof and might stand for 20 years without repairs. Note also the manner of attaching the rafters. Lacking the concept of nails, iron or wooden, these people utilized grass rope to lash the poles together.

The French explorers have given us excellent notes on the furniture used in the houses. The beds shown in one of the houses are based on a model used by the Natchez Indians. It is a simple frame work covered with woven cane strips and supported on forked sticks. The cane matting in the model is patterned exactly after fragments unearthed at Spiro. It is an intricate twilled weave.

All the implements, tools, weapons and pottery are exact duplicates of specimens found in the Spiro Mound. As in other crafts the Spiro Mound people were excellent potters. In front of the third house a pot is seen in the process of manufacture.

Directly following the sacrifices, the body of the Warchief, with those of his wives, will be buried under the floor of the Temple. The other victims will be buried nearby. Included with the bodies of the victims will be all of the necessities for their new life in Spiritland; water bottles, cooking pots, pipes, weapons, and quantities of intricately carved conch shells. Beads, copper-covered masks, and shell gorgets will also be placed in the graves for the use of the deceased and the benefit of future archaeologists.

After the burial ceremony, the cabin of the Warchief will be burned, the people will return to their duties of everyday life, and the Spiro Mound Culture will continue to flourish until claimed by oblivion. Such is the scene from the past as discovered by Oklahoma archaeologists. Though centuries old, it is a picture filled with pathos, tragedy, and human drama, made to live again.

Department of Anthropology—University of Oklahoma

#### ACKNOWLEDGMENTS

The Yearbook Staff and Faculty of the Spiro Schools express their appreciation to the following for their co-operation and assistance in the building of the theme for our Yearbook:

1. Bonnie C. Palmer, Museum Secretary, Museum of the University, The University of Oklahoma, Norman, Oklahoma
2. Patrick Patterson, Director, Woolaroc Museum, Frank Phillips Ranch, Bartlesville, Oklahoma
3. Mrs. C. E. Cook, Curator, Oklahoma Historical Society, Oklahoma City 5, Oklahoma

#### REFERENCES

1. Aboriginal Dwellings in the Museum Center including A Heroic Statue of Sequoyah, Museum of the University of Oklahoma, Norman—1948.
2. Hamilton, Henry W., THE SPIRO MOUND, THE MISSOURI ARCHAEOLOGIST; Volume 14 (Whole Volume), October 1952, Columbia, Missouri.
3. Shead, Ralph B., ENGRAVED SHELLS OF THE SPIRO MOUND; Reprinted from "The Seventh Annual Report of The Museum of The University of Oklahoma" 1950-51, Norman, Oklahoma.



"Nae man can tether time or tide."

# Yearbook Staff



Evalee Jones  
Business Manager



Eva Terry  
Sponsor



Lester Wade  
Sponsor



K. F. Conrad  
Editor



JoAnn Hull  
Assistant

Vernon Ward  
Assistant  
Business Manager



Paul Cox, Jr.  
Sales Manager



George Harvey  
Assistant



Joan Edwards  
Assistant



Sue Chance  
Art Editor



Josephine Maier  
Assistant

# Newspaper Staff

Margarett Barker



Editor



Glenda Dunnam  
Advertising  
Manager



Nancy Bunch  
Associate  
Editor



Katharine Frances  
Sponsor



Eva Terry  
Sponsor



Sue Chance  
Art Editor



Betty Remer  
Assistant  
Advertising  
Manager



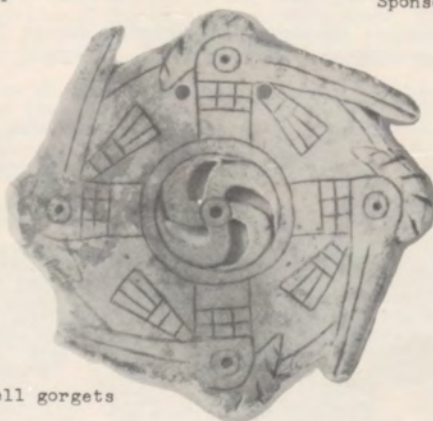
Doris Carter  
Circulation  
Manager



Joan Edwards  
Circulation  
Manager



Ruby Wright  
Columnist



Carved shell gorgets



Paula Snawder  
Columnist



Erma Lois Cloud  
Columnist



Alyce J. McClain  
Columnist



Jo Ella Wood  
Columnist



Wvonee Terry  
Typist



Loretta Gentry  
Typist



Gail Harris  
Sport Editor



Marilyn Goforth  
Typist



Doris Wilson  
Typist



Helen Perdue  
Typist



Mary Jones  
Typist

*King*

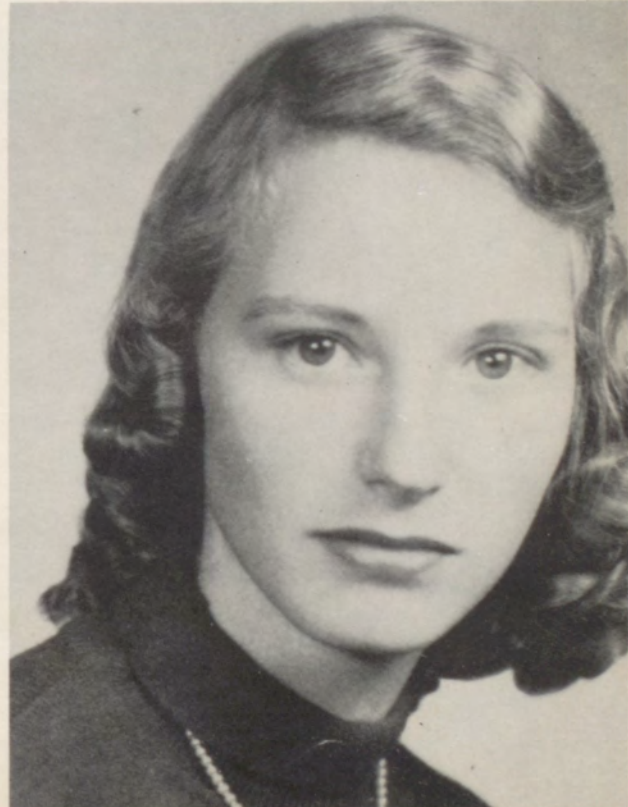
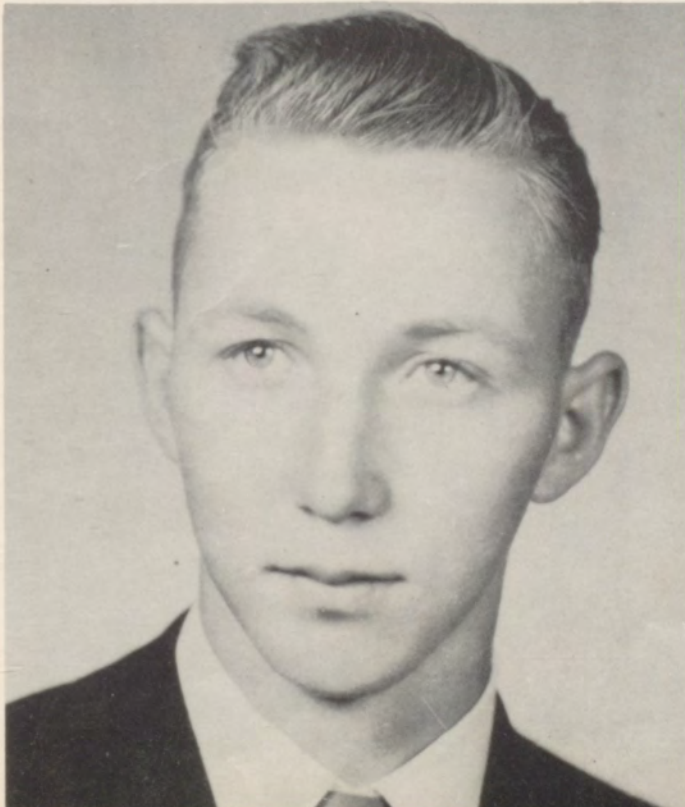
*Yearbook*

*Queen*



## *Attendants*

Annette Tobler, Johnny Downing, Beverly Clack, R. L. Williams, Frank W. Davies, Frankie Spiers, Mary Jones, J. D. Howell, Donna Marie Gill, Flora Lewis, Tommy Davis, Gerry Freeman, Leon Permenter, Carol Moore



# Yearbook

Prince

Princess

Frank W. Davies



Donna Marie Gill



## Attendants

First Row: Dale Ann Avery, Rufus Gonzales, Jerry Rhodes, Georgann Jones, Anita Wright, Joe Bob Dawson

Second Row: Johnny Redwine, Deborah Cox, Margaret Loudermilk, Larry Don Morrison, Frank W. Davies, Donna Marie Gill, Barbara Hamilton, W. C. Means, Shiela Buttress, Jimmie Burdick

Third Row: Helen Ridenour, Jim Ed Stout, Peggy Harlan, Ricky Dunn

Fourth Row: Allene McCann, Leon Cochell, Jane Ann Cox, Eugene Hamilton



# Administration



Charles F. Vaught

## Superintendent

## Board of

## Education

Cooper Redwine  
Member

J. R. Wren  
Vice President

Ralph Gamble  
President

Andrew Williams  
Clerk

Wilson Parham  
Member



# Faculty



Katharine Francis  
English  
Librarian



John Terrill  
Science



Lester Blaylock Wade  
English, Speech,  
Home Economics



Lillard Brown  
Vocational  
Agriculture



Freida Moore  
Mathematics  
Science



Eva Terry  
Commerce



Clennon Sockey  
Jr. Hi. Mathematics  
Jr. Hi. History



Lucille Stringer  
Music Director



Larry B. Young



Max Fox  
Band Director  
Science



Wright Blankenship  
VATP Instructor



Wilma Noblet  
Jr. Hi. English  
Jr. Hi. History



Jack Stogner  
Athletic Director



Patricia Thomas  
English, History,  
Spanish



O. C. Terry  
VATP Instructor



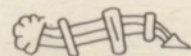
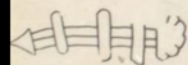
Eugene Butler  
Industrial Arts



Kathryn Potter  
Vocational  
Home Economics



David Thomas  
Assistant Coach  
Physical Education



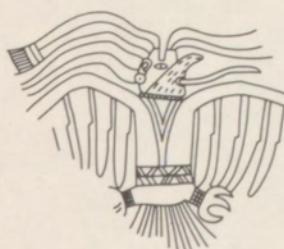
# Faculty



Viola Peck  
Sixth Grade



Estella Nance  
Sixth Grade



Veda Sharp  
Fifth Grade



Montez Stogner  
Fifth Grade



-HUMAN EFFIGY "BIG BOY"

STONE PIPE



Chester A. Noblet



# Principal Grade School



Lillian Watkins  
Fourth Grade



Edna Covey  
Fourth Grade



Nada Gee  
Second Grade



Opal Dill  
Second Grade



Juanita Nelson  
Third Grade



Faye Williams  
First Grade



Eva J. Brown  
Third Grade



Madge Solomon  
First Grade

# Maintenance Personnel



## Cafeteria

Eugene Butler  
Bus Driver

Floyd Nance  
Bus Driver  
Bus Mechanic



Alice Carter  
Supervisor



Murphy McDaniel  
Custodian

Herbert Herring  
Bus Driver



Bryant Martin  
Custodian

Bill Ardis  
Bus Driver



Frankie Cox  
Assistant

Lant Brown  
Bus Driver

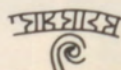
G. W. Monk  
Bus Driver



Pauline Ward  
Assistant



Lela Dunnam  
Assistant







K. F. Conrad  
Yearbook Staff



# A C T I V I T I E S



Evalee Jones  
Yearbook Staff  
Library

George Lee Smith  
Sr. Hi. Football  
F. F. A.

Arnold Duvall  
Jr. Hi. Football

Margarett Barker  
Paper Staff

John Carl Merryman  
Sr. Hi. Basketball

Mary Fesperman  
Jr. Hi. Basketball



## Achievements

in

Paul Cox, Jr.  
Student Council

Glenda Dunnam  
Pep Club

Ted Johnson  
Sr. Hi. Baseball

Bobby Wood  
4-H Club

Sue Ainsworth  
Office

Carolina Welch  
Sr. Hi. Basketball

Ruby Wright  
F. H. A.

Charles Roper  
Jr. Hi. Basketball

Artifacts from the Spiro Mounds



# Queen Halloween King



Donald King  
Billy Blaylock  
Bill Cody



JoAnn Hull  
Jo Nita Merryman  
Nell Thornburg



Jane Ann Cox  
Jimmie Underwood  
1953



Wanda Fields  
19

William Noblet  
52

## Attendants

Wayne Corley  
Melba Bell

David Vermilye  
Frances Swaim

Jimmie Harris  
Carolyn Gill



# Honor Society



M. Barker  
P. Cox  
B. Clack

G. Dunnam  
J. Wood  
S. Broughton

P. Snawder  
N. Bunch  
W. Curtis



R. Wright  
E. Jones  
V. Tibbitts

D. Alexander

K. Conrad  
D. Carter  
L. Littlefield



J. Hull  
T. Bittle  
G. Harper



D. King  
M. Robbins  
D. Harper

*Not Pictured  
Cooper M. Redw*

**The SEMCO Yearbook SYSTEM**  
For Producing School Yearbooks  
SEMCO COLOR PRESS, INCORPORATED  
Printers — Lithographers — Publishers  
129 Northwest 3rd Street - Oklahoma City, Oklahoma

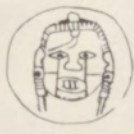


--HUMAN SACRIFICE EFFIGY CLAY PIPE  
(Height 9 3/4 in.)

*Ray H. Noel*  
FINE COLLEGE AND HIGH SCHOOL ANNUALS  
Sales Manager Northern Division  
Post Office Box 1107 - - Joplin, Missouri  
**Semco Color Press**  
Oklahoma City 1, Oklahoma

## Senior

## Play



HERE COMES CHARLIE  
By  
Jay Tobias

Cast

Nora Malone.....Janetta Shaw  
Officer Tim McGrill.....Donald King  
Mrs. Fanny Farnham.....Mildred Wortham  
Larry Elliott.....Ted Johnson  
Ted Hartley.....George Smith  
Vivian Smythe-Kersey.....Paula Snawder  
Uncle Aleck Twiggs.....Donald Hickman  
Charlie Hopps.....Helen DeShazo  
Mrs. Caroline Smythe-Kersey..Sue Garrett  
Mortimer Smythe-Kersey.....Dyarl Lackey

Sponsors  
Eugene Butler  
Jack Stomer



## Glee Club

First Row: Ginger Hicks, Carrie Rhodes, Edna Edwards

Second Row: Doris Wilson, Daisy Jones, Margie Person, Joan Wardrup, Pat Perez, Mary Jo Lewis, Mary Rlevins, Deloris Sanders

Third Row: Beverly Clack, Shirley Franklin, JoAnn Hull, LaGatha Campbell, Rillye Ann Harrison, Emily Herring, Shirley Evans, Alice Wilson, Betty Norman,

Fourth Row: Nancy Punch; Hyla Jean Jones; Betty Snawder; Sandra Doyel; Helen Perdue; Carol Harrison; Jimmy Lou Howard; Lucille Stringer, Director; Charlene Johnson; Paula Snawder

Fifth Row: Gail Harris, Frances Cox, Janetia Shaw, Sue Garrett, Wyvonne Terry, Shirley Kirk, JoAnn Anderson Marilyn Goforth



## Boys Chorus

First Row:  
Cooper Redwine, *Miss Bing*  
Jim Harlan West, *Crosby*

Second Row:  
R. L. Williams  
Dewey Rogers  
Allen McNatt  
Jack Mansell  
Billy Autry

Third Row:  
Joe Rhodes  
Larry Littlefield  
Larry Statham  
Jack Bettis  
K. F. Conrad  
Miss Stringer  
Director

Fourth Row:  
Frank H. Tibbitts  
Tony Lyons  
George Smith  
Paul Cox  
Charles Banning



## Music Club

First Row:  
Reuelynne Covey  
Pat Boyd  
Barbara Hamilton

Second Row:  
Doris Merchant  
Sarah Redwine  
Vivian McDonald

Third Row:  
Billy Jo Mann  
Faulette Butler  
Gayle Gamble  
Ronny Farham  
Kiawana Gamble  
Charles Stephens

Fourth Row:  
Peggy Harlan  
Jackie Butler  
Eugene Hamilton

Fifth Row:  
Shelba Fesperman  
William Noblet  
Diana Joyce  
Chavella Stephens  
Lucille Stringer, Director  
Annette Tobler  
Martha Overstreet  
Wyvonne Terry  
Glenda Dunnam  
Frances Cox  
Frankie Dunnam

Sixth Row:  
Mary Fesperman  
Kenneth Sebo





THE LITTLEST ANGEL  
Presented  
December 21, 1952  
Methodist Church





Mr. Sockey  
Sponsor  
Blaylock

Smith  
Fesperman

Barker  
Wood

M. Jones  
DeLange

Wright  
Cloud



Harvey

Remer

# Student Council



Mrs. Francis  
Sponsor  
E. Jones



Norman  
Herring



M. Jones  
Cloud



Maier  
Wilson



Wood  
Gill

Morgan  
Lewis

Broughton  
H. Jones



# Library



Merryman  
Terry

Chance  
Campbell

Gentry  
Wortham

Ainsworth  
Thornburg

Wardrup  
Harrison

Barker  
Wright

# Office Girls

# F. F. A.

First Table:  
Wayne Corley  
Clarence Vorton  
Howard Cox  
G. C. English  
Neal Mathews  
Charles Yorgan  
Billy Sebo  
Mr. Miller  
A. & M. Trainee  
Charles Sebo  
Wendell Lowrimore  
Bobby Woore  
Edward Cusick  
Jim Harlan West  
Bob Wood  
Dean Harper

## VOCATIONAL AGRICULTURE TRAINEES

John C. Rogers  
Ted Howell  
Carl Miller  
Joe Ross  
Leland Haswell  
Lloyd Parker

Second Table:  
Norman Wilson  
G. J. Stout  
Jack Mansell  
Oliver Cowles  
Harold Corley  
Roy Sebo  
Mr. Brown  
Advisor  
Charles Masterson  
Lonnie Cox  
Sumler Conrad  
Kenneth Greenwood  
Tom Tobler  
Ronnie Maxwell  
Larry Littlefield  
Frankie Spiers  
William Smith



## OFFICERS

President - George Smith  
Vice-President - Billy Cox  
Secretary - Billy Blaylock  
Treasurer - Harold Maxwell  
Reporter - Donald King  
Sentinal - Tex DeShazo  
Advisor - Lillard Brown



First Table:  
Harold Maxwell  
Connie Holman  
Donald King  
Charles Banning  
David McKinney  
Burl Carlile  
Mr. Ross  
A. & M. Trainee  
Johnny Downing  
L. D. Johnson  
Earl Carlile

Second Table:  
Donnie Woodard  
Gene Stout  
A. J. Greenwood  
Mr. Brown  
Advisor  
Billy Hamilton  
Clarence Meadows  
Ray Adams  
Joe Rhodes  
Kenneth Lowrimore  
Rodger Duncan

## MOTTO

LEARNING TO DO  
DOING TO LEARN  
EARNING TO LIVE  
LIVING TO SERVE



First Table:  
Marlin Wortham  
Lonnie Davis  
Tex DeShazo  
Vernon Ward  
L. B. Carpenter  
Arvie Goins  
Joe Underwood

Second Table:  
Frank Tibbitts  
Chester Dalley  
Vernon Evans  
Bill West  
Mr. Brown  
Advisor  
Bob Gist  
Billy Cox  
Henry Hickman  
Harold Greenwood  
Donald Hickman

## COLORS

National Blue  
and Corn Gold





First Row:  
 Beverly Clack; Betty Remer; Martha Overstreet, Treasurer; Wyvonne Terry, Historian; Jo Nita Merryman, Parliamentarian; Loretta Gentry, Vice-President; Glenda Dunnam, President; Shirley Kirk, Reporter; Ruby Wright, Secretary; Jo Ann Anderson, Song Leader.

Second Row:  
 Marilyn Goforth; Mary Jo Lewis; Ida Lou Turnipseed; Carol Harrison; Billie Harrison; Sue Hicks; Betty Snawder; Nancy Gill; Frances Cox; Margie Person; Mary Hickman; Carrie Rhodes.

Third Row:  
 Evalee Jones; Janetta Shaw; Martha Fannin; Mary Blevins; Patsy Ford; Helen Crumb; Gail Harris; Pat Perez; Annette Tobler; Joan Edwards; Ralene Satterfield; Lora Gay Reed; Kathryn Potter, Sponsor.

Fourth Row:  
 Mary Jane Tobler; Nancy Bunch; Margaret Barker; Jimmie Lou Howard; Carolina Welch; Rosemary Stanfield; Hyla Jean Jones.

## F. H. A.

First Row:  
 Roy Carlile  
 Larry DeLange  
 J. H. Wells  
 David Vermilye  
 Bob Wood  
 James Wood  
 Kenneth Conrad  
 Clenith Boitel  
 Jimmie Whitehead  
 Charles Rhodes  
 Howard Welch

Second Row:  
 Leon Permenter  
 Joe Hurd  
 Jerry Southern  
 Larry Littlefield  
 George Shaw  
 Louis Halcomb  
 G. L. Stout  
 Howard Bell  
 Jimmy Kimberling

Third Row:  
 Kenneth Moore  
 Roy Sanders  
 Sammy Riggs  
 Eugene Smith  
 Garvis Broom  
 Richard Hunter  
 Robert Acker  
 Shelby Campbell  
 Jimmie Harris  
 Carl Metcalf  
 William Noblet  
 Malachi Nixon  
 Harold Masterson



## 4-H Club

First Row:  
 Ruby Duncan  
 Chavela Stevens  
 Shelba Pesperman  
 Rosie Smith  
 Wanda Fields  
 Shirley Franklin  
 Carolyn Gill  
 Lois Butler  
 Shirley Evans  
 Aileen Acker

Second Row:  
 Dorothy Garrett  
 Martha Johnson  
 Carol Moore  
 Georgia Rutledge  
 Frances Swain  
 Odessa Bowling  
 Linda Merryman  
 Susie Mahar  
 Ann Rhodes  
 Mary Ann Sebo  
 Anetta McKinney

Third Row:  
 Connie Beshears  
 Ruth Ann Ridenhour  
 Jo Ella Wood  
 Obalee Isom  
 Yvonne Winn  
 Betty Gillion  
 Gerry Lynn Freeman  
 Patsy Hanna  
 Melba Rowland  
 Ann Jones





# Pep Club

## Pep Club Officers

- President  
Glenda Dunnam
- Vice-President  
Loretta Gentry
- Secretary  
Carolina Welch
- Reporter  
Betty Jo Remer
- Student Council Rep.  
Mary Jones
- Sponsor  
Wilma Noblet



First Row: Crumb; Snawder, P; DeShazo; Evans; Jones, D; Merryman; Stout; Morgan; Wilson, A; Kirk; Anderson.

Second Row: Alexander; Chance; Goforth; Herring; Lewis, M; Harrison, C; Hull; McClain; Conrad; Shaw; Turnipseed; Harrison, B.

Third Row: Reed; Dunnam; Hicks; Rhodes; Johnson; Howard; Snawder, B; Ford; Bell; Stanfield; Welch; Wood; Schrimsher; Lewis, B.

Fourth Row: Remer; Tobler; Terry; Gentry; King; Wright; Wardrup; Overstreet; Boozman; Sanders; Satterfield; Cloud; Bailey; Jones, H; Norman; Duncan.

Fifth Row: Halcomb; Martin; Perdue; Edwards; Maier; Clack; Bunch; Broughton; Thornburg; Jones, M; Wilson, D; Person; Perez; Metcalf; Lewis, P.



## Yell Leaders

- Helen Crumb
- Paula Snawder
- Jo Nita Merryman
- Shirley Kirk
- Jo Ann Anderson

## Band

*Bobby Buckles + his Pairs fall of Reetham  
The "Beat That Bugan Day" Players*

*Max Fox, Director*

### First Row:

- Larry Statham  
Cooper Redwine  
Sue Hayes  
Nancy Gill  
Charles Sebo  
Jimmy Cox

### Second Row:

- Sue Hicks  
Burnie Burgess  
Mary Hickman  
Mary Reid  
Ralene Satterfield  
Larry Littlefield  
Martha Overstreet  
William Noblet  
Richard Hunter  
Dorothy Davies  
Malichi Mixon

### Third Row:

- Linda Merryman  
Odessa Bowling  
Obalee Isom  
Gail Harris  
Shelba Pesperman  
Chevela Stevens  
Frankie Dunnam  
Cleon Martin  
Annette Tobler  
Virginia Tibbitts  
Roy Sebo



*Max Fox, Director*

*Changes:*  
Sue Hicks  
Burnie Burgess  
Mary Hickman  
Mary Reid  
Ralene Satterfield  
Larry Littlefield  
Martha Overstreet  
William Noblet  
Richard Hunter  
Dorothy Davies  
Malichi Mixon

*Associations:*  
Mary Statham  
Loretta Gentry  
Carolina Welch  
Betty Jo Remer  
Mary Jones  
Wilma Noblet

# Student Council Play

HILLBILLY COURTSHIP  
By  
Austin Goetze  
Cast

Billy Blaylock.....Louis Cattaro  
Margarett Barker.....Emmy Peppin  
George Smith.....Luke Stilsby  
Paul Cox.....Pa Stilsby  
Ruby Wright.....Ma Peppin  
Harold Corley.....Wash Jaddo  
R. L. Williams.....Sol Silverstein  
Mary Jones.....Seedie Triffet  
Mary Peaperman.....Bridget O'Flannigan  
Erma Lois Cloud.....Lula Triffet  
Larry DeLange.....Reverend Boswell

Stage Managers  
Bob Wood  
Betty Jo Remer

Sponsor  
Clennon Sockey



## Junior Play

LIGHTS OUT

A Mystery-Comedy in Three Acts

By

Paul S. McCoy

Cast

Agnes Harwood..Billye Ann Harrison  
Doris Harwood.....Beverly Clack  
Carl Emerson.....George Harrod  
Vicky Wayne.....Shirley Kirk  
Helen Freeland.....Nancy Bunch  
John Bates.....Tommy Bittle  
Susan Bates.....Daisy Jones  
Neil Parker.....D. Paul Cox  
William Vaughn.....Frank Tibbitts  
Ella Tucker.....Shirley Evans  
Benny King.....R. L. Williams

USHERS	USHERETTS
Billy Cox	Mary Jo Lewis
Vernon Ward	Betty Jo Remer
Lonnie Davis	Jo Ann Anderson
Anderson Irvin	Jo Nita Merryman

Class Sponsors  
Miss Kathryn Potter  
Mr. Max Fox



## Industrial Arts



First Row:

J. R. Harper  
Jimmy Cox

Second Row:

Henry Hickman  
Dyarl Lackey  
Eugene Butler, Instructor

Third Row:

Jerry Fields  
Harold Corley  
Don Hickman  
Roger Duncan  
Kenneth Sebo  
David McKinney

Fourth Row:

Carson Joyce



George Smith  
Football 4 yrs.



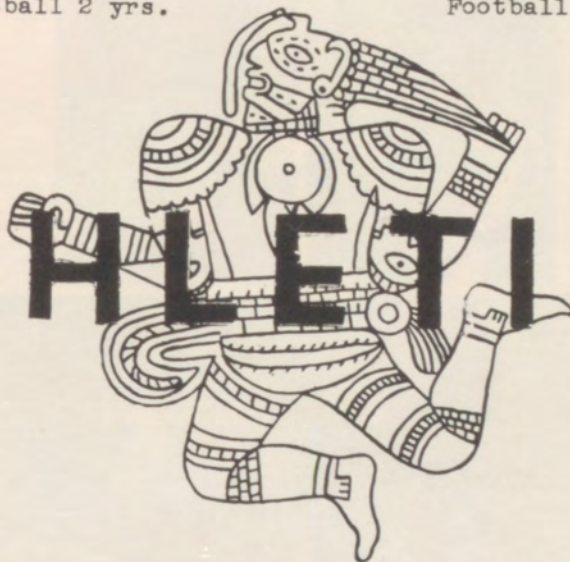
Carl Merryman  
Football 4 yrs.  
Basketball 4 yrs.  
Baseball 4 yrs.  
Chester Dalley  
Football 1 yr.

Marlin Wortham  
Football 4 yrs.  
Ray Jones  
Football 2 yrs.

Donald King  
Football 3 yrs.  
William West  
Football 1 yr.

Ted Johnson  
Football 4 yrs.  
Basketball 4 yrs.  
Baseball 4 yrs.  
Vernon Evans  
Football 3 yrs.

# ATHLETICS



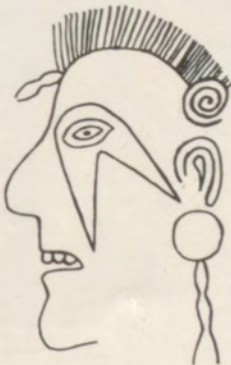
## Lettermen



Frankie Spiers  
Football 3 yrs.



Paula Snawder  
Basketball 3 yrs.



Carolina Welch  
Basketball 4 yrs.



Connie Holman  
Baseball 3 yrs.

# Football



Joe Underwood  
Head Trainer



Jimmie Harris  
Asst. Trainer

A. L. Conrad.....Tackle  
Kenneth Shettleworth...Guard  
L. D. Johnson.....Half Back  
George Harvey.....Guard  
Donald King.....Tackle  
R. L. Williams.....Tackle  
Marlin Wortham.....Guard  
John Carl Merryman..Half Back  
George Smith.....Full Back  
Ted Johnson.....Half Back  
Harold Greenwood.....End  
David McKinney...Quarter Back  
Bill West.....Guard  
David Ainsworth.....Half Back  
Harold Corley.....Half Back  
A. J. Greenwood.....Guard  
Bill Cox.....Quarter Back  
Lonnie Davis.....End  
Bob Gist.....Half Back  
Vernon Ward.....Center  
Tex DeShazo.....Guard  
Paul Cox.....Quarter Back  
Ray Jones.....Guard  
Vernon Evans.....Tackle  
Anderson Irvin.....Guard  
Frankie Spiers.....End  
Chester Dalley.....Guard  
Billy Blaylock.....End  
Frank Harold Tibbitts...Guard  
Arnold DuVall.....End  
Bill Cody.....Full Back



## District 11 B Champions



David Thomas  
Coach

Jack Stogner  
Coach

Ed Johnson Full Back  
John C. Merryman Full Back  
George Smith Full Back  
Vernon Evans Tackle  
Marlin Wortham Tackle  
Frankie Spiers End  
Bill West Guard



## Game Review

Spiro 27.....Talihina 0  
\*Spiro 0.....Hartshorne 0  
Spiro 34.....Haileyville 0  
Spiro 7.....Heavener 6  
Spiro 20.....Watts 0  
\*Spiro 14.....Quinton 14  
Spiro 27.....Panama 0  
Spiro 28.....Wilburton 7

\* Games won by Spiro on  
First Downs.

ALL CONFERENCE  
FOOTBALL TEAM



# Homecoming



## Football



## Attendants

Paula Snawder  
Pearl Cowan  
Carolina Welch  
Jo Nita Merryman

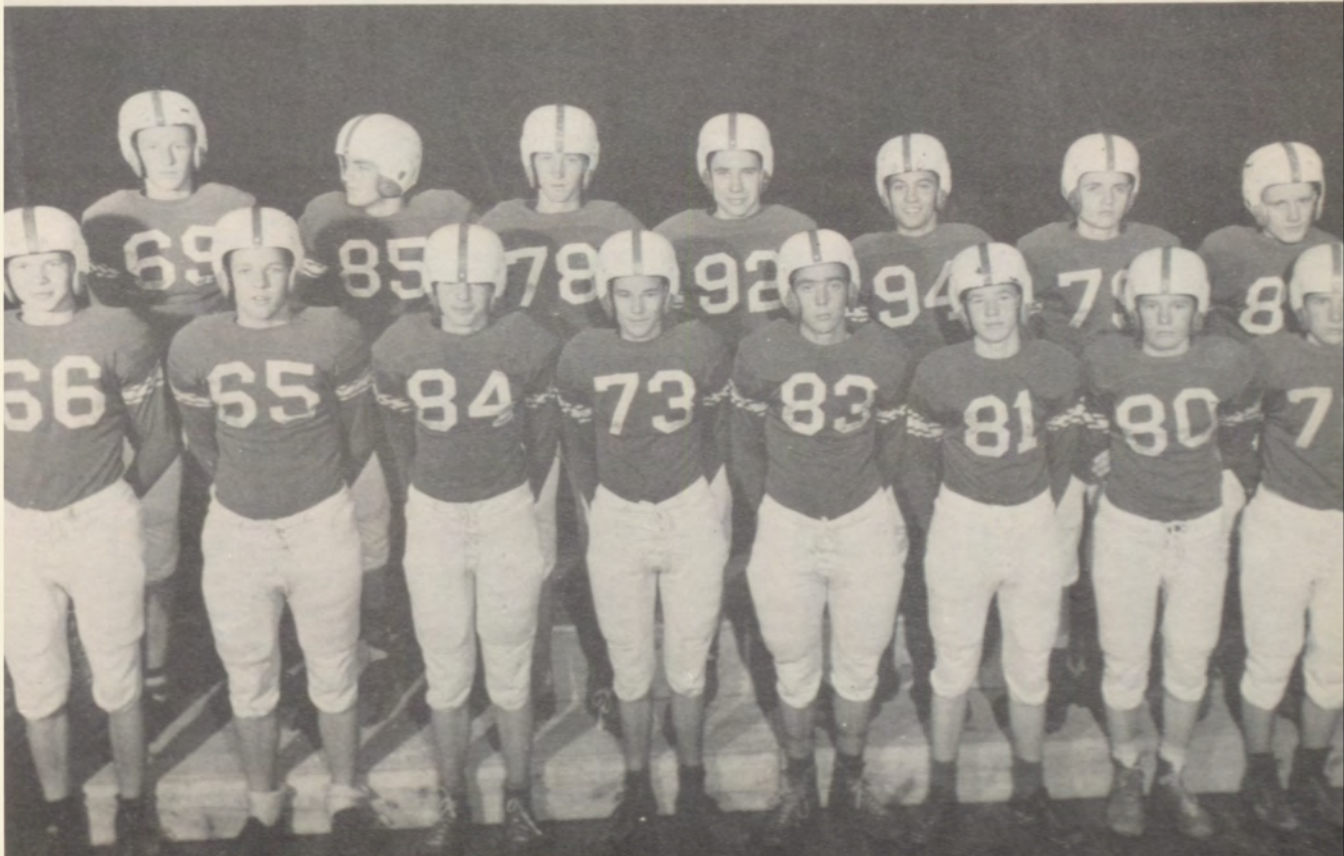


## Queen

JoAnn Hull



Pamela Scantling  
Bill Stogner





First Row:  
 Charlene Johnson  
 Betty Reid  
 Paula Snawder  
 Sue Hicks  
 Melba Bell  
 Betty Snawder  
 David Thomas, Coach

Second Row:  
 Robbie Burton  
 Carolina Welch  
 Patsy Ford  
 Mary Fesperman  
 Nancy Bunch  
 Erma Cloud  
 Gail Harris  
 Oleta Collins

## Senior High Basketball

First Row:

Joe Underwood  
 Bill Cox  
 John Carl Merryman  
 Johnny Downing  
 L. D. Johnson

Second Row:

Bill Blaylock  
 Jimmy Cox  
 Anderson Irvin  
 Ted Johnson  
 Paul Cox  
 Lonnie Davis  
 David Thomas, Coach



## Baseball



First Row:  
 Jack Stogner, Coach  
 Joe Underwood, S.S.  
 David McKinney, 3B.  
 Bill Cox, L.F.  
 Lonnie Davis, 1B.  
 Billy Blaylock, 3B., P.  
 John Carl Merryman, 2B.  
 Carl Cloud, R.F.  
 L. D. Johnson, C.

Second Row:  
 Tommy McDaniel, O.F.  
 Connie Holman, P.  
 Paul Cox, P.  
 Tex DeShazo, P.  
 Jimmy Cox, O.F.  
 Charles Sebo, Nothing  
 Bill Cody, O.F.  
 Bob Gist, P.

First Row:  
 Dorothy Davies  
 Shelba Pesperman  
 Ruby Duncan  
 Betty Treat  
 Mamie Newberry  
 Gaye Hicks  
 Obalee Isom  
 Mary Reid  
 Jerry Nell Conrad  
 David Thomas, Coach

Second Row:  
 Betty Jo Bailey  
 Norma Jean Reed  
 Chavela Stephens  
 Sue Hayes  
 Snodine Sanders  
 Mary Ann Holcomb  
 Dorothy Burroughs  
 Virginia Tibbitts  
 Velta Metcalf

Third Row:  
 Ann Jones  
 Nancy Gill  
 Lorene Satterfield  
 Melba Jo Bell  
 Mary Pesperman  
 Betty Reid  
 Lora Boyd  
 Ann Rhodes



## Junior High Basketball



First Row:  
 Wayne Corley  
 Larry Statham  
 J. D. Howell  
 David Ainsworth  
 Billy Sebo  
 David Thomas, Coach

Second Row:  
 Carl Cloud, Manager  
 Gene Harper  
 Neil Mathews  
 Charles Roper  
 Dean Harper

## Driver Education

First Row:  
 Loretta Smith  
 Lora Gay Reed  
 Betty Jo Remer  
 Shirley Evans  
 Helen DeShazo  
 Betty Lewis  
 Tony Lyons  
 Charles Sebo  
 Marlin Wortham

Second Row:  
 Martha Fannin  
 Virginia Greenwood  
 Mary Jane Tobler  
 LaVern Alexander  
 Naomi Martin  
 Gerald Lackey  
 Derwin Smith  
 Tommy Bittle  
 Billy Nichols  
 Chester Noblet, Instructor



# Freshmen Initiation







George Smith  
Most Dependable



# STUDENT

Connie Holman  
Best Groomed

Alyce McClain  
Best Groomed

Donald King  
Most Studious

Ruby Wright  
Most Studious

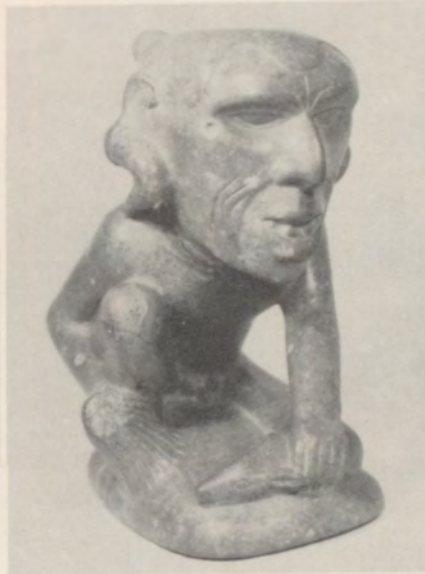
Paul Cox  
Most Courteous

Shirley Kirk  
Most Courteous

R. L. Williams  
Friendliest

Gail Harris  
Friendliest

K. P. Conrad  
Most Ambitious



Evalee Jones  
Most Ambitious

Ray Jones  
Most Popular

JoAnn Hull  
Most Popular

Carl Merryman  
Most Athletic

Carolina Welch  
Most Athletic

Billy Blaylock  
Best-All-Around

Paula Snawder  
Best-All-Around

"Lucifer"-----Pipe Effigy

Ted Johnson  
Handsomest

Pearl Cowan  
Prettiest



## Who's Who

# BODY



Margarett Barker  
Most Dependable



# First Grade

Christene Ashing  
Dale Ann Avery  
Lucretia Beutleschies  
Carlion Sue Blevins  
Ronald D. Boitel

Barbara Bryant  
Don Burton  
Larry Campbell  
Betty Carroll  
Jerry Carroll

Jimmy Champion  
Roger Dale Chance  
Nathaniel Craig  
Carles Crane  
Joe Bob Dawson

Larry Garrett  
James Eaton  
Odell Fanning  
Riley Farris  
Richard Fisk

Sherman Dix  
Wendell Gist  
Shirley Goins  
Jimmy Garner  
Leon Garner

Jimmy Dale Gragg  
Rufus Gonzales  
Larry Lewis  
Cheryl Jones  
Joan Jones

Carolyn Masterson  
Sherry Moore  
Freddie Nichols  
Betty Jo Richardson  
Larry Jo Riggs  
Frankie Robinson

Edward Rogers  
Paula Jo Rogers  
Jerry Sebo  
Doris Ann Swafford  
Melvin Vandagriff  
Sandra Kay Whisenhunt

Maxine Willhite  
Linda Willyard  
Anita Wright  
Sharon Wright  
Bobby Woods  
Billy Joe Wooten

# Second Grade

Ann Ainsworth  
 Janie Aishman  
 Lavonne Ardis  
 James Barnes  
 Brenda Brown



Charles Brown  
 Gene Brown  
 James Butler  
 Everett Campbell  
 Carolyn Cheek



Joyce Christmas  
 Jimmy Christy  
 Jerry Lee Cochell  
 Sharon Conrad  
 Mary Ellen Cook  
 Darlene Strain



Frank William Davies  
 Garry Lee Davis  
 Rebecca Fields  
 Robert Fields  
 Richard Franklin  
 Charles David Frazier



Gayle Anne Gamble  
 Othel Herman Gamble  
 Diana Gentry  
 Donna Marie Gill  
 Rachel Goins  
 Van Ray Greenwood



Marilyn Hamilton  
 Dale Hebenstreit  
 Tommy Halcomb  
 Georgann Jones  
 Bernice Lowrimore  
 Leroy Lowrimore



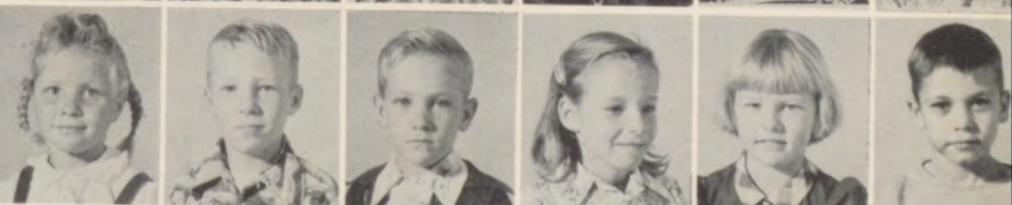
Glenda Mahar  
 Jerry Wayne Mann  
 Margaret McCann  
 Larry McKinney  
 Frankie Merryman  
 Helen Permenter



Karan Sue Pinion  
 Jimmy Ragland  
 Jerry Rhodes  
 Patricia Richardson  
 Clinton Ridenour  
 Kenneth Scalercio



Bill Smith  
 Melba Stonecypher  
 Billie Jo Thomas  
 Glynn Underwood  
 Glen Vandergriff  
 Judy Walker



Sue Ann White  
 Cecil Whisenhunt  
 J. L. Williams  
 Paula Willyard  
 Nick Winn  
 Jimmy Woods



# Third Grade

Willard Ashing  
Betty Bell  
Jimmie Blevins  
Carroll Boitel  
Marilyn Bowen

Deryl Bryant  
Jimmie Burdick  
Benton Butler  
Stephen Butler  
Sheila Buttress  
Linda Cathey

Billie Chance  
Helen Chaney  
Deborah Cox  
Gearl Crane  
Iva Daniels  
Billy Dix

Norma Dunn  
Jim Dunn  
Jimmie Evans  
Steve Evans  
Rita Farris  
Billie Gamble

Jerry Garner  
Linda Garrett  
Judy Goforth  
Aimee Hall  
Patricia Hamilton  
Norma Hanna

Phyllis Hanna  
Dale Higgins  
Joanna Hudlow  
Ruby Brown  
Mary Ann Johnson  
Jerry Jones

David Joyce  
Joey Latimer  
Deloris Lewis  
Hershell Masterson  
Vivian McDonald  
Janis Nixon

Dianna Moore  
Ronnie Parent  
Johnny Redwine  
Bonita Richie  
Guthery Ritter  
Christina Robison

Betty Rowan  
Glen Shaw  
Steve Slack  
Jessie Smith  
Joyce Statham  
Carolyn Statham

Susanne Walker  
Lou Webb  
Nancy West  
Andy Williams  
Nancy Wren  
Alice Young

# Fourth Grade

Ruthell Autry  
 Martha Beutelschies  
 Patricia Bolt  
 Wilma Bourne  
 Connie Boyd  
 Jimmy Burton



Jackie Butler  
 Skip Butler  
 Effie Chaney  
 Ethel Mae Christmas  
 Jane Christy  
 Brenda Conrad



James Conrad  
 Reuelyne Covey  
 Billy Darneal  
 Judy Dunn  
 Cleve Fields  
 Vernon Fletcher



Carolyn Franklin  
 Sharon Frazier  
 Kiawana Gamble  
 Mary Frances Garner  
 Jay Norman Gillion  
 Cairl Goldman



Barbara Hamilton  
 Sue Hanna  
 La Vell Higgins  
 Billy Hurd  
 Roy Don Johnson  
 Johnny Johnston



Johnny Jones  
 Clyde Jordan  
 Richard Kirkendall  
 Margaret Loudermilk  
 Monroe Lowrimore  
 Joan Madden



Jeannell Maier  
 Dean Manis  
 Buddy McClain  
 W. C. Means  
 James Morgan  
 Larry Morrison



Ronnie Parham  
 Eddie Jo Remer  
 Paul Rhodes  
 Odell Rowland  
 Gene Sebo  
 Helen Sebo



Jack Smith  
 Charles Southern  
 Jerry Stewart  
 Tommy Tate  
 Tom Tobler  
 Judy Wagoner  
 Johnny Goins



Charles Wells  
 Judy West  
 Zelma White  
 Harl Williams  
 Harold Taylor  
 Vera Jo Williams  
 Roy Rogers Wooten



# Fifth Grade

Hedric Adams  
 Carolyn Boitel  
 Jerry Buchanan  
 Jimbo Bunch  
 Paulette Butler

Ruben Butler  
 Harlen Buttress  
 Bobby Callaway  
 Charles Campbell  
 Joe Carlile

Paul Collins  
 Mary Conrad  
 Allen DeLange  
 John Duncan  
 Ricky Dunn

Darvin Evans  
 Gloria Fields  
 Betty Fisk  
 Sue Frazier  
 Alex Frye

Bobby Garner  
 Phyllis Goines  
 Sue Gragg  
 Peggy Harlan  
 H. B. Hayes

Martha Jaggars  
 Billie Jo Mann  
 Barbara Masterson  
 Truman McKinney  
 Jerry McPherson  
 Kenneth McPherson

Peggy Moore  
 Alpha Dean Oldham  
 Myrna Parent  
 Anita Pinion  
 Sarah Redwine  
 Helen Ridenour

Martha Rowan  
 Verna Sanders  
 DeLores Smith  
 Shirley Stiles  
 Jim Ed Stout  
 Dale Stout

Aaron Swafford  
 Virginia Votaw  
 Agnes Walker  
 Patricia Wilson  
 Pat Woolbright  
 Donald Young

# Sixth Grade

Haskell Adams  
David Ainsworth  
Doyle Barnes  
Donnie Beshears  
Patricia Boyd



Wayne Boyd  
James Carlile  
Harold Carter  
Jimmy Carter  
Michael Cloud



Johnny Cloud  
Leon Cochell  
Iona Cook  
Jane Cox  
Tommy Cox  
Frances Darneal



Molly Daniels  
Shirley Davis  
Patsy Garner  
James Earl  
Freida Epperson  
Ocie Farris



Edith Foster  
R. C. Gamble  
Wayne Duvall  
Fred Gentry  
Amos Goines  
Harold Goins



Eugene Hamilton  
Sally Hurd  
Theresa Johnson  
Billy King  
Birdie Kirkendoll  
Virgil Kirkendal



Bessie Lewis  
Doris Lewis  
Darlene Lowrimore  
Glenda Martin  
Illene McCann  
Allen McCoy



Doris A. Merchant  
Carolyn Newberry  
Clifford Pearce  
Raymond Rhodes  
Faye Rogers  
Virginia Rodgers



Lucretia Shaw  
Ramona Shaw  
Louise Statham  
Judy Smith  
Charles Stephens  
Jimmie Underwood



Nell Stonecipher  
Judith Vermilye  
Rose Mary Wagner  
Alma Walker  
Sally Sue Wood  
Mary Wooten



# Seventh Grad

Aileen Acker  
Howard Bell  
Clenith Boitel  
Garvis Broom  
Lois Jean Butler  
Jerry Barlow

Kenneth Conrad  
Harold Cottingim  
Larry DeLange  
S. C. Rep.  
Shirley Evans  
Carolyn Dunn  
Frances Epperson

Wanda Fields  
Reporter  
Shirley Franklin  
Carolyn Gill  
Secretary  
Billy Joe Girty  
Bernece Gotes  
Carol Moore

Louis Halcomb  
Jimmie Harris  
Palmer Harris  
Richard Hunter  
Ronnie Jahrman  
Cecil Johnson

Mary Lou Jones  
Jerry Nell Kilgore  
Jim Kimberling  
Georgia Maier  
Pearl Maier  
Jo Ann McCann

Anetta McKinney  
Donald McPherson  
Anita Zee Means  
Carl Gene Metcalf  
Malachi Mixon  
Vice-president  
William Noblet  
President

Leon Permenter  
Bobby Lee Reed  
Charles Rhodes  
Valeria Rhodes  
Sammy Riggs  
Joe Rowan

Mary Ann Sebo  
George Shaw  
Eugene Smith  
Rosie Lee Smith  
Dorothy Spiers  
Jimmie Tobler

Sadie Underwood  
Ray Votaw  
James Webb  
Howard Welch  
J. H. Wells  
Harley Joe White

Jimmy Whitehead  
Marie Wilson  
Yevonne Winn  
Janell Woolsey  
Peggy Young



# Eighth Grade

Robert Acker  
 Connie Lee Beshears  
 Odessa Bowling  
 Lora Ann Boyd  
 Donald Breedlove  
 John Bunch



Dortha Burrows  
 Shelby Campbell  
 Roy Carlile  
 Troy Carlile  
 David Christy  
 Aaron Cloud



Doris Faye Cloud  
 Tommie Davis  
 Frankie Dunnam  
 Donald Evans  
 Shelba Fesperman  
 Eugene Fields



Charles Ford  
 Gerry Lynn Freeman  
 C. B. Garrett  
 Dorothy Garrett  
 Kenneth Gentry  
 Vice-president  
 Betty Gillion  
 Joe Stewart



Allan Gist  
 Andy Greenwood  
 Janice Hanna  
 Larry Hanna  
 Patsy Hanna  
 Joe Hurd  
 Reporter  
 Obalee Isom



Betsy Jaggars  
 Keith Johnston  
 Martha Nell Johnson  
 Diana Joyce  
 Ann Jones  
 Iola King  
 Jimmy King



Patricia Lowrimore  
 Susie Mahar  
 Cleon Martin  
 Harold Masterson  
 Scott McMillen  
 Linda Merryman  
 Kenneth Moore



James Neeley  
 Secretary  
 B. George Newberry  
 Helen Pinion  
 Verna Jean Porter  
 Ann Rhodes  
 Ruth Ann Ridenour  
 Melvin Rowan



Melba Rowland  
 Georgia Rutledge  
 Roy Lee Sanders  
 Jerry Southern  
 Malcolm Stephens  
 Milton Stephens  
 Frances Swaim  
 David Vermilye  
 Charles Wagner  
 President  
 Virginia White  
 Norman Wilson  
 Bobby Lee Wood  
 S. C. Rep.  
 Jim Ed. Wooten



# Freshmen

David Ainsworth  
Doris Alexander  
Betty Jo Bailey  
Melba Jo Bell

Catherine Boitel  
Mary Boozman  
Ronald Coleman  
Dolphia Colley  
Bobby Conrad

Jerry Nell Conrad  
Sumler Conrad  
Wayne Corley  
Oliver Cowles  
President  
Howard Cox

J. R. Cox  
Lonnie Cox  
Edward Cusick  
Dorothy Davies  
Kenneth Downing

Ruby Duncan  
Arnold Duvall  
Joe Edwards  
G. C. English  
Sandra Doyel

Mary Fesperman  
S. C. Rep.  
Leslie Foster  
Valerie Frye  
Helen Garner  
Johnny Gentry

Normalee Gregory  
Mary Ann Halcomb  
Secretary  
Dean Harper  
Gene Harper  
Tommy Harrald

Gary Harrison  
Shirley Hayes  
Reporter  
Sylvia Herring  
Ginger Hicks  
Harvey Hickman

Oletta House  
J. D. Howell  
Joy Howard  
Betty Huggins  
Mildred Jones

# Freshmen

Floyd Lawrence  
Larry Littlefield  
Billy Lovett  
Flora Lewis



Jack Mansell  
Charles Masterson  
Neal Mathews  
Harmon Matlock



Ronnie Maxwell  
Fern McCoy  
Velta Metcalf  
Charles Morgan  
Emma Lee Boyer



Clarence Morton  
Mamie Newberry  
Alva Overstreet  
Ella Faye Parker  
Cooper Redwine  
Vice-president  
*"Big Man" (?)* →



Norma Jean Reed  
Betty Reid  
Mary Reid  
Dewey Rogers  
Charles Roper



Snodine Sanders  
Lorene Satterfield  
Betty Schrimsher  
Billy Sebo  
Leon Shaw



Kenneth Shettleworth  
Bonnie Shoopman  
William Smith  
Larry Statham  
Chavela Stephens



Vernon Stiles  
G. L. Stout  
Virginia Tibbitts  
Henry Tobler  
Tom Tobler



Charles Toon  
Betty Treat  
Darlene Welker  
Norman Wilson  
James Wood



# Sophomores

Billy Autry  
Charles Banning  
Jack Bettis  
Shirley Broom

Sue Broughton  
Bernie Burgess  
Robbie Burton  
Burl Carlile

Earl Carlile  
Sue Clark  
Carl Cloud  
President  
Frankie Cloud  
Ray Adams

Bill Cody  
Sue Collins  
A. L. Conrad  
Harold Corley  
S. C. Rep.  
Frances Cox

Jimmy Cox  
Wanda Curtis  
Reporter  
Emma Daniels  
Johnny Downing  
Rodger Duncan

Edna Edwards  
Leona Fenton  
Gerald Fields  
Patsy Ford  
Nancy Gill

Patsy Gist  
A. J. Greenwood  
Billy Hamilton  
Gail Harris  
Carol Harrison

Mary Hickman  
Sue Hicks  
Jimmie Lou Howard  
Hulet Brown  
Charlene Johnson

# Sophomores

L. D. Johnson  
 Vice-president  
 Lillie Mae Johnson  
 Shiela Wyatt  
 Carson Conn Joyce



Isabel King  
 Jean Latta  
 Margie Person  
 Kenneth Lowrimore



Tony Lyons  
 Tom McDaniel  
 David McKinney  
 Allen McNatt  
 Clarence Meadow



Katherine Moffett  
 Bobby Moore  
 Shirley Morgan  
 Betty Norman  
 Forster Ortleib



Martha Overstreet  
 Secretary  
 Pat Perez  
 Carrie Sue Rhodes  
 Joe Rhodes  
 Deloris Sanders



Ralene Satterfield  
 Charles Sebo  
 Kenneth Sebo  
 Shirley Shaw  
 Derwin Smith




Betty Snawder  
 Gene Stout  
 Mary Stout  
 Florence Strain  
 Nell Ann Thornburg




Annette Tobler  
 Jim Harlan West  
 Roy Williams  
 Alice Wilson  
 Donnie Woodard




# Juniors




JoAnn Anderson  
Secretary  
Retha Jane Bell  
Tommy Bittle




Billy Blaylock  
S. C. Rep.  
Billie Deen Broom  
Nancy Bunch  
Beverly Clack




Erma Lois Cloud  
Billy Cox  
Paul Cox, Jr.  
Reporter  
Helen Crumb




Lonnie Davis  
Tex DeShazo  
Shirley Evans  
Martha Fannin



Julia Mae Franklin  
Jack Frye  
Bob Gist  
Harold Greenwood



Kennith Greenwood  
Virginia Greenwood  
Mary Harris  
Billye Ann Harrison



George Harrod  
George Harvey  
Emily Herring  
Anderson Irvin

# Juniors

Daisy Jones  
Vice-president  
Hyla Jean Jones  
Shirley Kirk  
President



Gerald Lackey  
Betty Lewis  
Mary Jo Lewis  
Josephine Maier



Helen Masterson  
Jo Nita Merryman  
Shirley Neeley  
Wanda Newbury



William Nichols  
Lora Gay Reed  
Betty Remer  
Maxine Robbins



Roy Sebo  
Loretta Smith  
Rosemary Stanfield  
Frank Harold Tibbitts



Mary Jane Tobler  
Dola Turner  
Ida Lou Turnipseed  
Joe Underwood



Vernon Ward  
Joan Wardrup  
R. L. Williams  
Jo Ella Wood



# Seniors

LaVerne Alexander  
 Sue Ainsworth  
 Margaret Barker  
 Mary Blevins

Lola Butler  
 LaGatha Campbell  
 L. B. Carpenter  
 Song Leader  
 Doris Carter

Sue Chance  
 K. F. Conrad  
 Pearl Cowan  
 Chester Dalley

Helen DeShazo  
 Glenda Dunnam  
 Joan Edwards  
 Vernon Evans

Sue Garrett  
 Loretta Gentry  
 Marilyn Goforth  
 Arvie Dean Goins

Arlene Gray  
 J. R. Harper  
 Henry Hickman  
 Donald Hickman  
 Connie Holman



# Seniors

JoAnn Hull  
Reporter

Ted Johnson  
Secretary

Evalee Jones

Ray Jones  
President



Mary Jones  
Donald King  
Dyarl Lackey  
Harold Maxwell



Naomi Martin  
Alyce Jayne McClain  
John Carl Merryman  
Vice President  
Helen Perdue



Annetta Shaw  
Janetta Shaw  
Paula Snawder  
George Smith



Frankie Spiers  
Wyvonee Terry  
Carolina Welch  
William West



Doris Wilson  
Marlin Wortham  
Mildred Wortham  
Ruby Wright  
S. C. Rep.





# Homecoming



**NEELY'S  
BARBER & BEAUTY SHOPPE**

Phone 245  
SPIRO, OKLAHOMA

**WORTHAM GROCERY**

Hamburgers — Ice Cream — Pop  
And a Nice Line of Groceries  
Phone 324  
SPIRO, OKLAHOMA

**OKLAHOMA  
TIRE & SUPPLY COMPANY**

SPIRO OKLAHOMA  
Phone 99

**JERRY CALDWELL**

Cleaning and Pressing  
Phone 200

**THE WARD STORE**

"The Store of Personal Friendly Service"  
SPIRO, OKLAHOMA

**Parks E. Harlan, Insurance**

P. O. Box 576 Phone 146  
SPIRO, OKLAHOMA

**Congratulations, Bulldogs!**  
**SPIRO ROLLER RINK**

Spiro, Oklahoma

**GULF PRODUCTS**

**FOSTER'S SERVICE STATION**

U. S. Tires and Batteries  
Phone 162 Spiro

**LEE BROTHERS**

for Quality Merchandise

Phone 148 Spiro, Okla.

**CONGRATULATIONS!**

**SPIRO STATE BANK**

Phone 23  
Spiro, Oklahoma

**Lyon's Grocery & Station**

Sunset Corner — Good Gulf Products

Phone 814-F-12

BEST WISHES TO THE  
CLASS OF 1953

**Stevenson Lumber Company**

"YOUR CROSLEY DEALER"

Spiro, Oklahoma

**SPIRO TIMES**

CUSTOM PRINTING

EDWARD BROWN, Publisher

SPIRO

OKLAHOMA

**FIGHT 'EM BULLDOGS**

Hope you are as tough as that good N. R. B. GYM FINISH  
which you use on your gymnasium floors.

**H. B. MEYER & SON**

1306 Canton Street

Dallas 2, Texas

---

FINE CLASS RINGS  
ANNOUNCEMENTS  
YEARBOOKS  
AWARDS

**JOSTEN'S**

Since 1897

Box 515 **R. A. Finlayson, Representative**  
Muskogee, Okla.

**Congratulations, Bulldogs**

---

CONGRATULATIONS

**TIBBITTS GROCERY**

Phone 224  
Spiro, Oklahoma

**Remer's Market & Grocery**

**Locker and Curing Plant**

Phone 128  
Spiro, Oklahoma

---

Congratulations, Bulldogs

**Tobler's Grocery & Market**

Phone 118  
SPIRO, OKLAHOMA

**MARQUISE STUDIO**

**School Photography**

Enid, Oklahoma

FOR FLAVOR AND FRESHNESS BUY



## SHIPLEY BAKING COMPANY

---

### MIDWEST HARDWARE & SUPPLY CO.

Rawlings Sporting Goods — The Finest in the Field

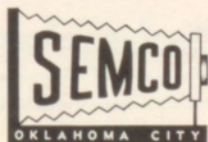
Westinghouse Appliances

Television — Refrigerators

924 Garrison

Telephone 4616

Ft. Smith, Arkansas



Established 1935

# COPELAND OIL COMPANY

JOBBER

PRODUCTS

Stigler—766  
Spiro—162

PHONES

Eufaula—66  
Poteau—103

BOX 396 — STIGLER, OKLAHOMA



BALDWIN AND WURLITZER  
PIANOS

RISLER MUSIC COMPANY

Phone 3-6702  
506 Garrison

Ft. Smith

Arkansas

Headquarters for  
Conn and Pan American  
Band Instruments

JENKIN MUSIC COMPANY

COMPLIMENTS OF

**BECKMAN'S**

Pasteurized Dairy Products

Phone 21044      2511 Spradling Ave.  
Ft. Smith, Arkansas

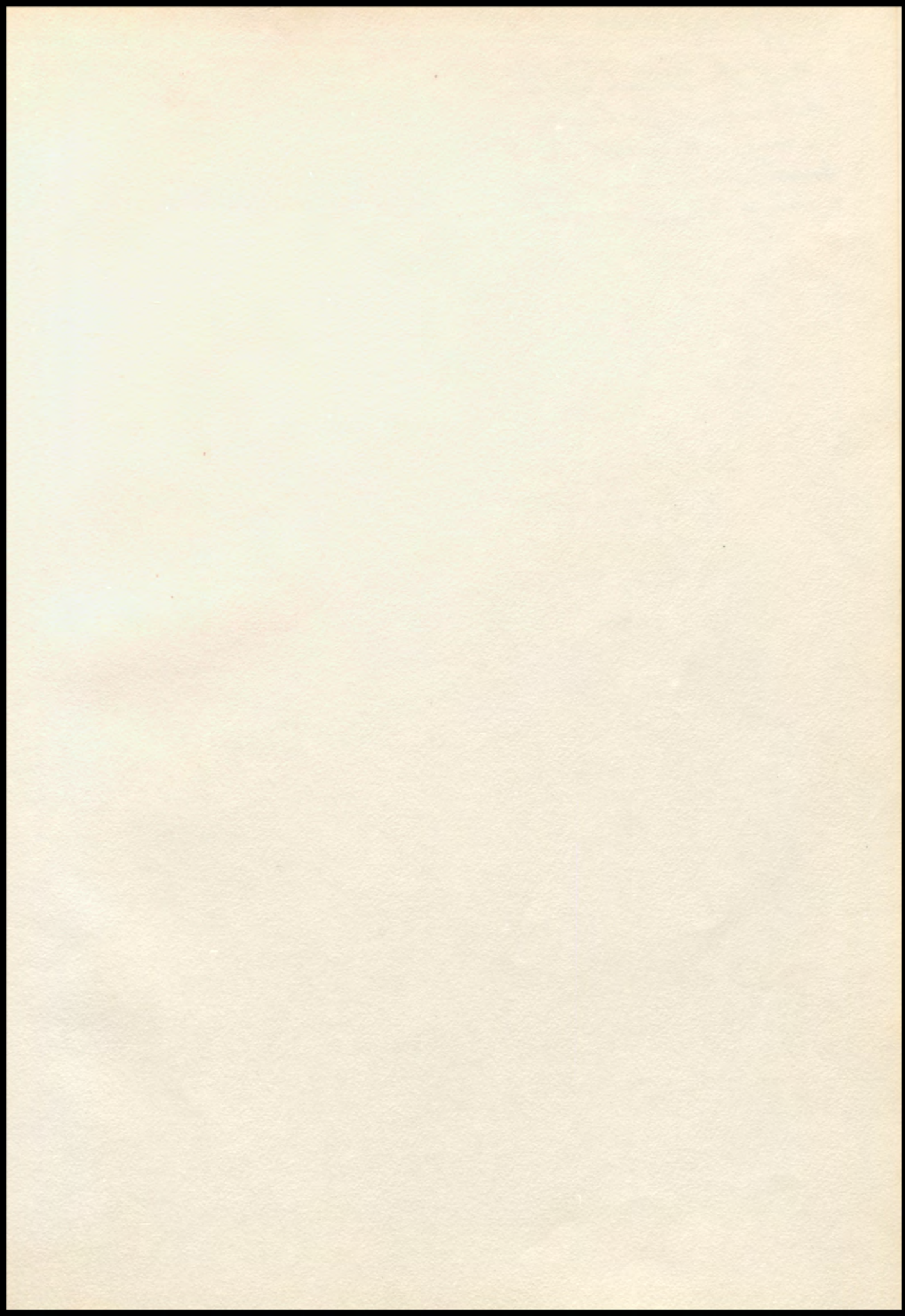


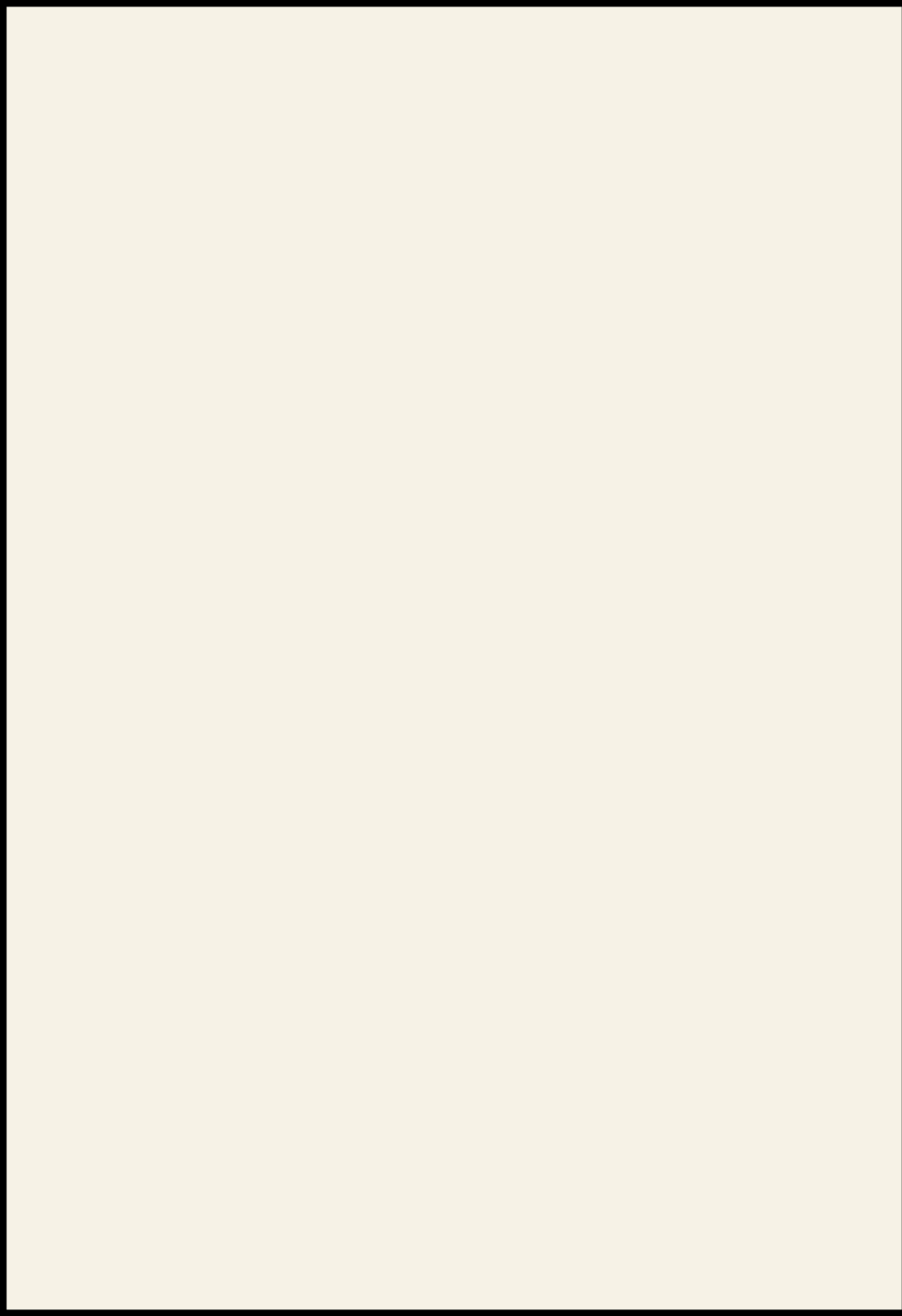
Fort Smith's Most Complete and Modern  
Department Store

909 Garrison  
Fort Smith, Arkansas

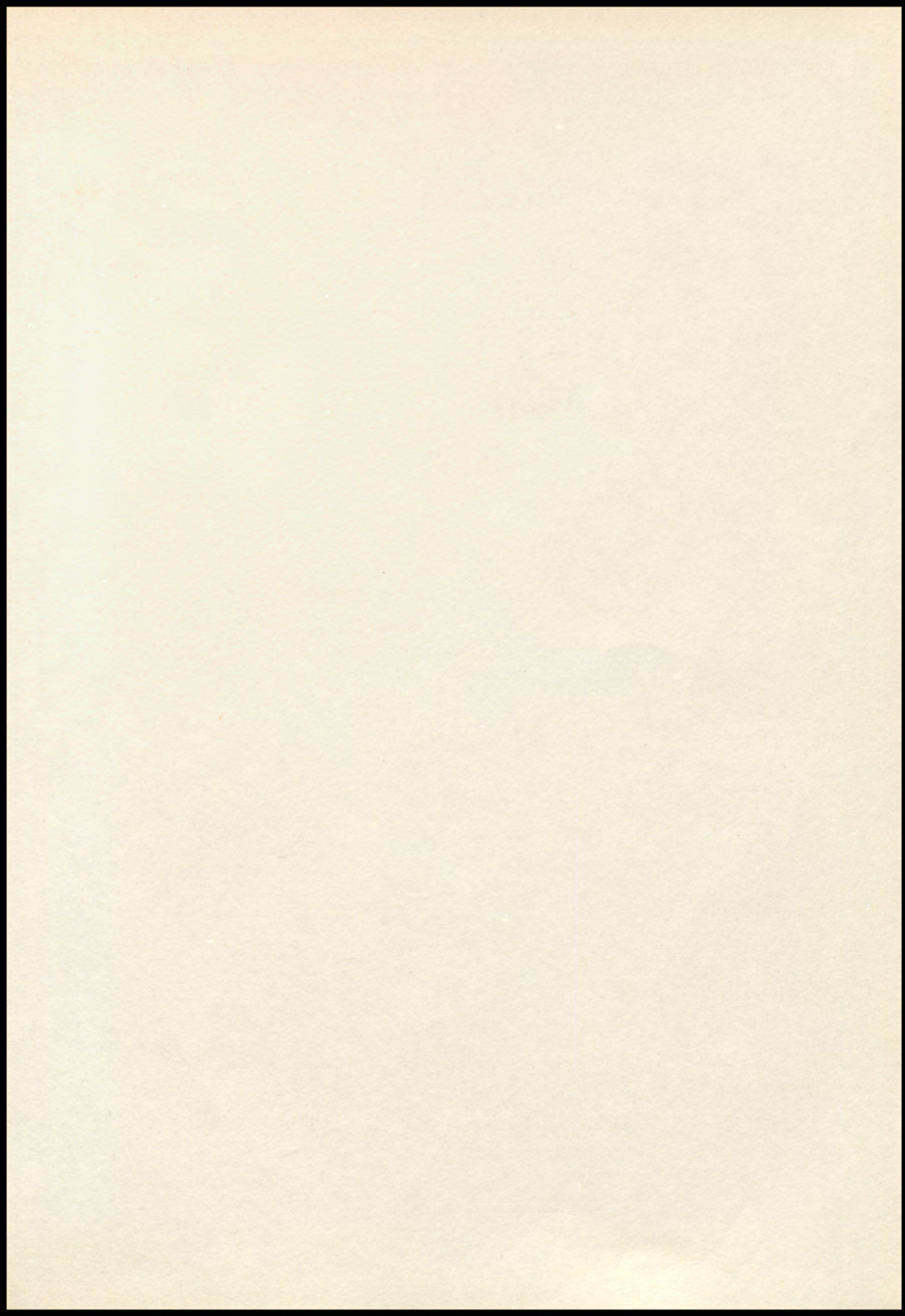
**BEST  
WISHES**

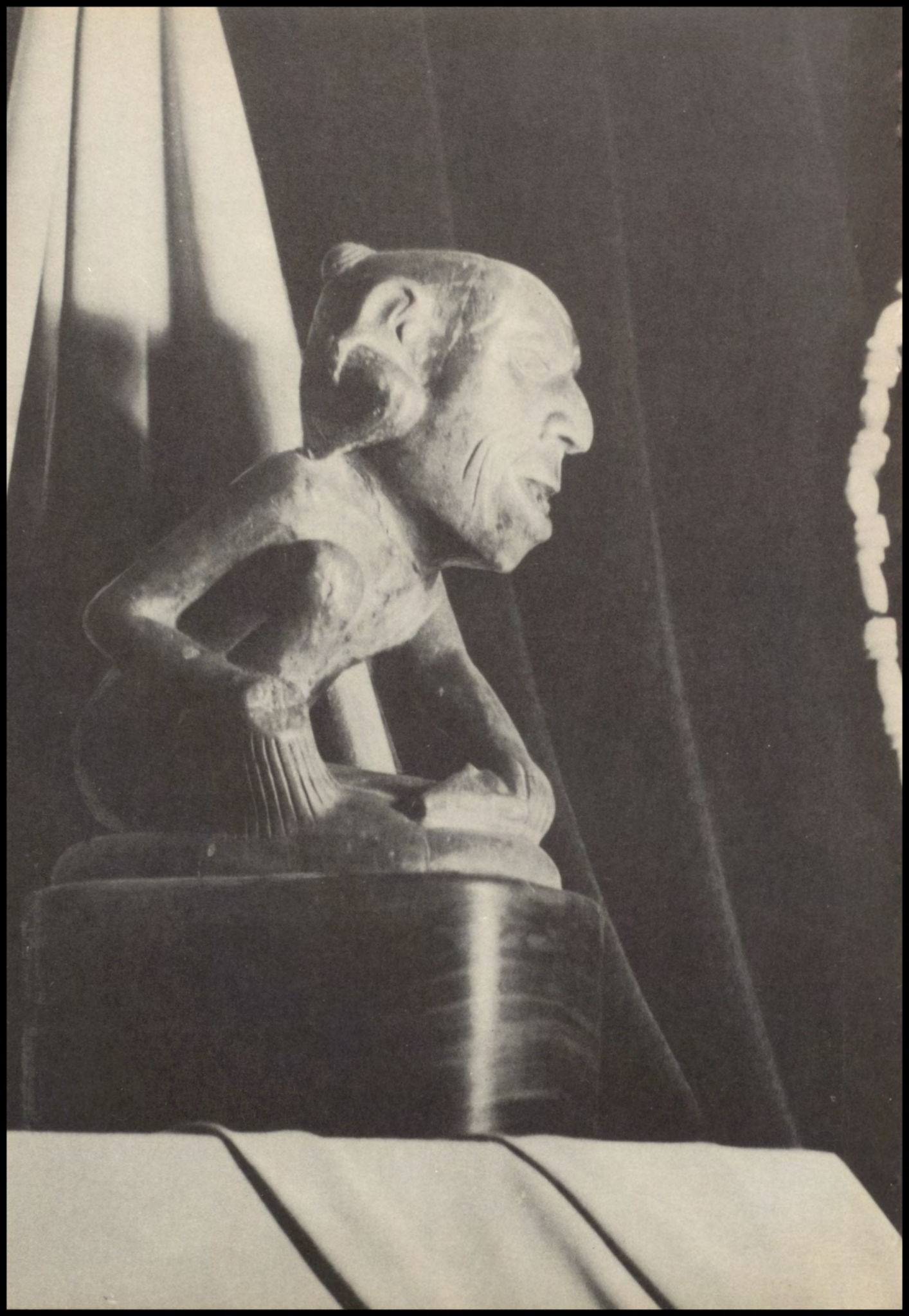
*"Satisfaction guaranteed or your money back"* **SEARS**













Spiro-Hut

